

# Quick Installation Guide

---

**EAP2061HP**

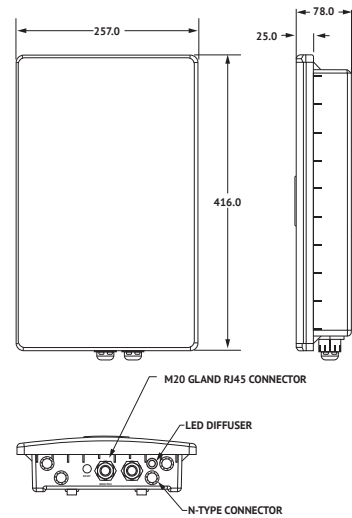
Document Revision 1.0

# 1 Introduction

The Radisys EAP2061HP is a self-enclosed Ethernet based outdoor Access Point (AP) supporting Wi-Fi 6 with integrated antennas, able to support community access and multi-user connectivity over wireless. The industrial hardened Access Point unit can operate as either a stand-alone hotspot, supporting high numbers of concurrent users with Enterprise grade security, or as a wireless extender with self-configuration and optimization for services over large geographic areas. The EAP2061HP offers one 2.5 Gigabit Ethernet WAN port with dual-band 2T2R concurrent 2.4GHz and 5GHz radios and internal antennas designed for optimal range and coverage. The EAP2061HP is designed for outdoor installation with a weatherproof, IP-67 hardened plastic case, able to withstand extreme weather conditions.

## 2.1 Contents

- EAP2061HP
- Quick Installation Guide
- 30W PoE Injector, 48VDC



## 2.2 Product Specification

Interfaces	Specification
WAN Uplink	1 10/100/1000/2.5G Base-T port (RJ45)
DC Power	PoE 30W 48VDC
Power Consumption	25W Maximum
Operating Temperature	-20 to ~60°C (-4° to 140°F)
Operating Humidity	5 to 95% (non-condensing)
Dimensions	257mm X 416mm X 78mm

## 2.3 Interfaces

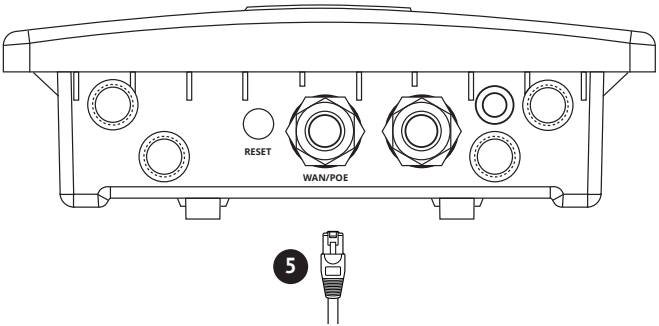
Item	Description
1 Reset	Reboot AP (quick push) Reset to factory (press and hold for 10 seconds)
2 WAN/PoE	2.5GE Ethernet port for WAN (RJ45)

## 2.4 LED Status Indicators

Definition	Color	Status	Duration
LED	WHITE	ON	The AP unit is powered ON.
		OFF	The AP unit is powered OFF.
	BLUE	ON	Internet connection of the AP is unstable.
	GREEN	ON	The AP has stable internet connection.

## 3.1 Installation

1. Remove Access Point from packaging.
2. Connect Ethernet cable to WAN port (5). Recommend CAT6 or better Ethernet cable for 2.5GE port.



The EAP2061HP can be powered in two ways:

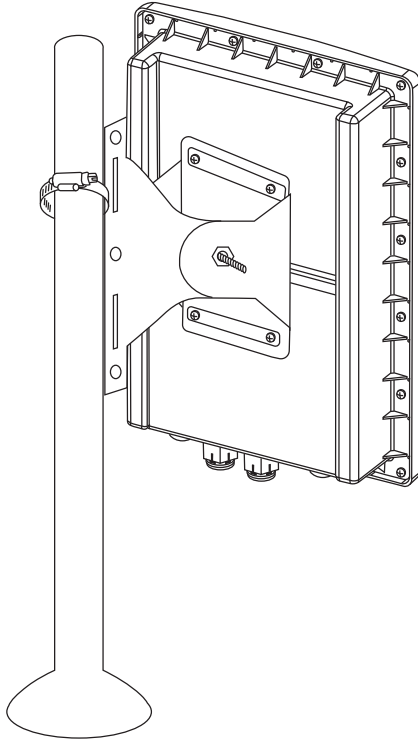
**PoE Power:** PoE power injector can be used to power the Access Point via the WAN/PoE port. Ensure to check the PoE power specifications to select the appropriate PoE injector. EAP2061HP supports a 48V PoE injector and complies to 802.3at standard.

**PoE Switch:** The Access Point can be powered using a PoE switch. Please assure proper grounding and lightning protection between PoE Switch and Access Point.

**User note:** Access Point may be upgraded to newer software image prior to provisioning of services. Access Point may reset after the initial boot up sequence is complete, or software image is upgraded.

### 3.2 Mounting Access Point on a Pole

EAP2061HP can be pole mounted using the clamp attached to the pole. Please refer to the diagram below.



### 3.3 Web Graphical User Interface and Configuration

Once Access Point is connected to the internet, perform the following steps:

- Using a laptop, join the WiFi "maverickXXXX"
- Launch a web browser and connect to address 192.168.1.1.
- After response, enter the following in the portal:
  - 1.Username: root
  - 2.Password: openwifi

A screenshot of a web portal for OpenWiFi. The header says "OpenWiFi" with a signal icon. Below it, a box titled "Authorization Required" says "Please enter username and password." There are input fields for "Username" (containing "root") and "Password". At the bottom are "Login" and "Reset" buttons.

OpenWiFi

**Authorization Required**  
Please enter username and password.

Username

Password

The screenshot shows the 'Uplink Configuration' page with the 'Uplink' tab selected. The page title is 'Uplink Configuration'. Below the title, it says 'The uplink settings allow overriding the WAN connection properties of the local device.' The 'Connection' dropdown is set to 'Static address configuration'. The 'IP4 Address' field contains '192.168.1.10/24' with a note 'Address and mask in DDR rotation'. The 'IP4 Gateway' field contains '192.168.1.1'. The 'IP6 Address' field is empty with a note 'Address and mask in CIDR rotation'. The 'IP6 Address' field contains '8.8.8.8'. The 'DNS Server' field contains '8.8.4.4'.

- Once logged in, navigate and click on the tab Uplink and provide the details.
- To configure PPPoE as WAN, select the connection as Address Configuration via PPPoE as captured in the below screenshot. Provide the necessary username and password.

The screenshot shows the 'Uplink Configuration' page with the 'Uplink' tab selected. The page title is 'Uplink Configuration'. Below the title, it says 'The uplink settings allow overriding the WAN connection properties of the local device.' The 'Connection' dropdown is set to 'Address Configuration via PPPoE'. The 'Username' field is empty. The 'Password' field is empty.

## 4 Troubleshooting

The Power LED is OFF after pressing the Power switch.

- Verify that the Ethernet cable from the network is connected to the WAN port and has PoE power enabled, or when using a PoE power injector assure that unit is plugged in.

The LED is flashing Blue after the device is powered ON.

- Verify that the Ethernet cable from the network is connected to the WAN port.
- If the device does not have a stable internet connection, contact the network administrator or service provider for resolution.

The LED is green after the device is powered ON.

- The device has a stable internet connection. Connect to the default SSID or LAN port for further action.

## 5 Caution

Please follow the instructions below to avoid physical injury:

- Use appropriate outdoor rated Ethernet and power wiring.
- You should not install Access Point during lightning storms to avoid electrical shock.
- DO NOT plug in, turn on or attempt to operate an obviously damaged unit.
- DO NOT use near water.
- DO NOT operate Access Point in a location where maximum ambient temp. exceeds 60°C.
- DO NOT place near high temperature source.
- Set up the unit away from direct sunlight or other electrical equipment.
- Avoid impact stresses when handling connectors.
- Check the available voltage supply.
- Only connect approved accessories.
- This equipment is not suitable for use in locations where children are to be present.
- DO NOT disassemble the unit.

## 6 Limited Warranty

The product warranty does not cover damage resulting from hardware being installed in areas subject to rain, high humidity, water ingress and dust or debris. Disassembling product or removing enclosure cover from the assembly is a safety hazard and will void warranty. EAP2061HP may only be repaired by authorized service personnel.



RSYSEAP2061HP10232025A